



UNIVERSITY *of* LIMERICK  
OLLSCOIL LUIMNIGH

**DEPARTMENT OF MANUFACTURING AND OPERATIONS ENGINEERING**

**SAMPLE END OF SEMESTER ASSESSMENT PAPER**

**AUTUMN SEMESTER: SAMPLE PAPER**

**MODULE TITLE: PN4215**

**GRADING: 40% FOR CAD EXAMINATION**

**LECTURER: W.F. GAUGHRAN**

**INSTRUCTIONS TO CANDIDATES: (See Overleaf)**

## INSTRUCTIONS TO CANDIDATES

Accuracy is of paramount importance in the placement of entities.

Set your drawing limits to 300, 200 for PART 1 and PART 2 of the Exam.

Write your name and ID number on the Drawings for PART 1, PART 2 and PART 3.

You can set up the drawing environment you require before the start of the exam.

You are not permitted to bring any electronic or written material into the exam.

The exam is structured as follows and consists of three PARTS.

### **PART 1 (MARKS 10%)**

Part 1 Consists of one drawing file, and should be saved as “n PART 1.dwg”, where n is your ID Number.

1. Reproduce the front view of the **PLATE** as shown in **Fig. 1**.  
(DO NOT DIMENSION THIS DRAWING)

### **PART 2 (MARKS 20%)**

Part 2 Consists of one drawing file, and should be saved as “n PART 2.dwg”, where n is your ID Number.

1. Reproduce the given elevation and plan of the **GEARBOX COVER** as shown in **Fig. 2**.  
(DO NOT DIMENSION THIS DRAWING)
2. Create the Sectional Elevation of the GEARBOX COVER generated by the offset Cutting Plane A-A

### **PART 3 (MARKS 10%)**

Open the drawing file EXAMDIM from the WORKAREA on your Computer. Open this Drawing, and “SAVE As” with the following Name “n PART 3.dwg”, where n is your ID Number.

1. Dimension the Drawing **exactly** as shown in Fig. 3

## **FILE SAVING**

Save ALL your work, including templates to the WORKAREA on your Computer. At the end of the exam, you should have 3 files in WORKAREA:

1. “n PART 1.dwg”
2. “n PART 2.dwg”
3. “n PART 3.dwg”

(WHERE *n* is your ID Number)

# PART 1

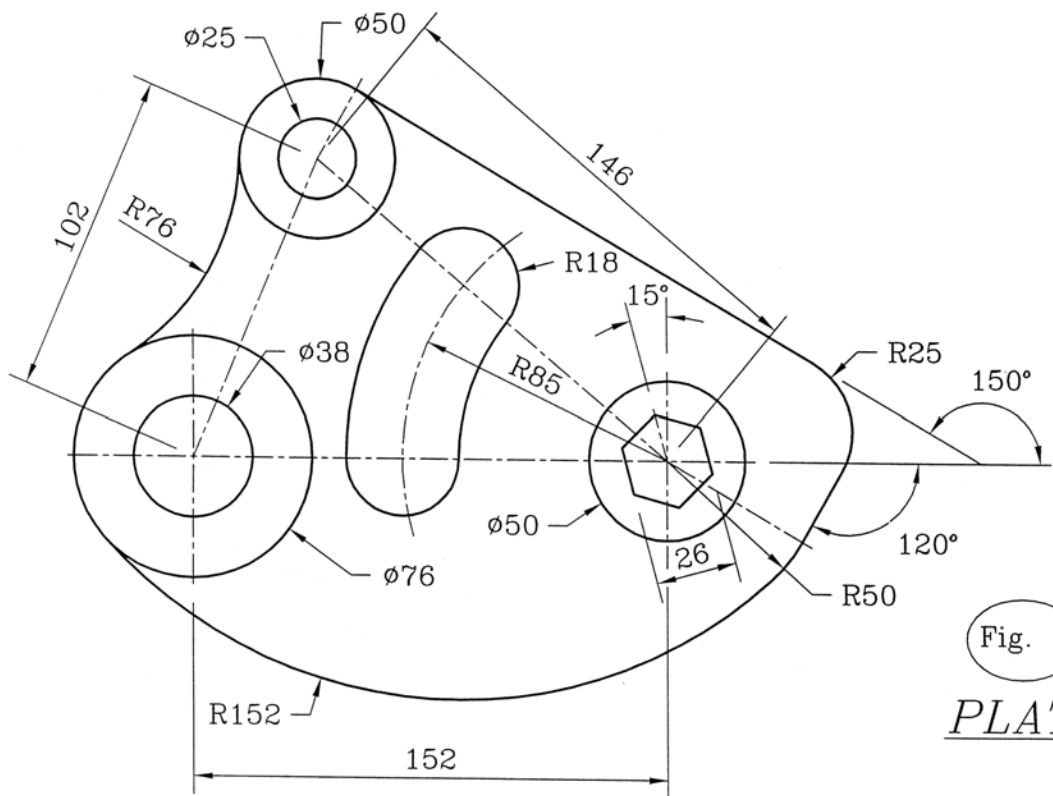


Fig. 1

PLATE

# PART 2

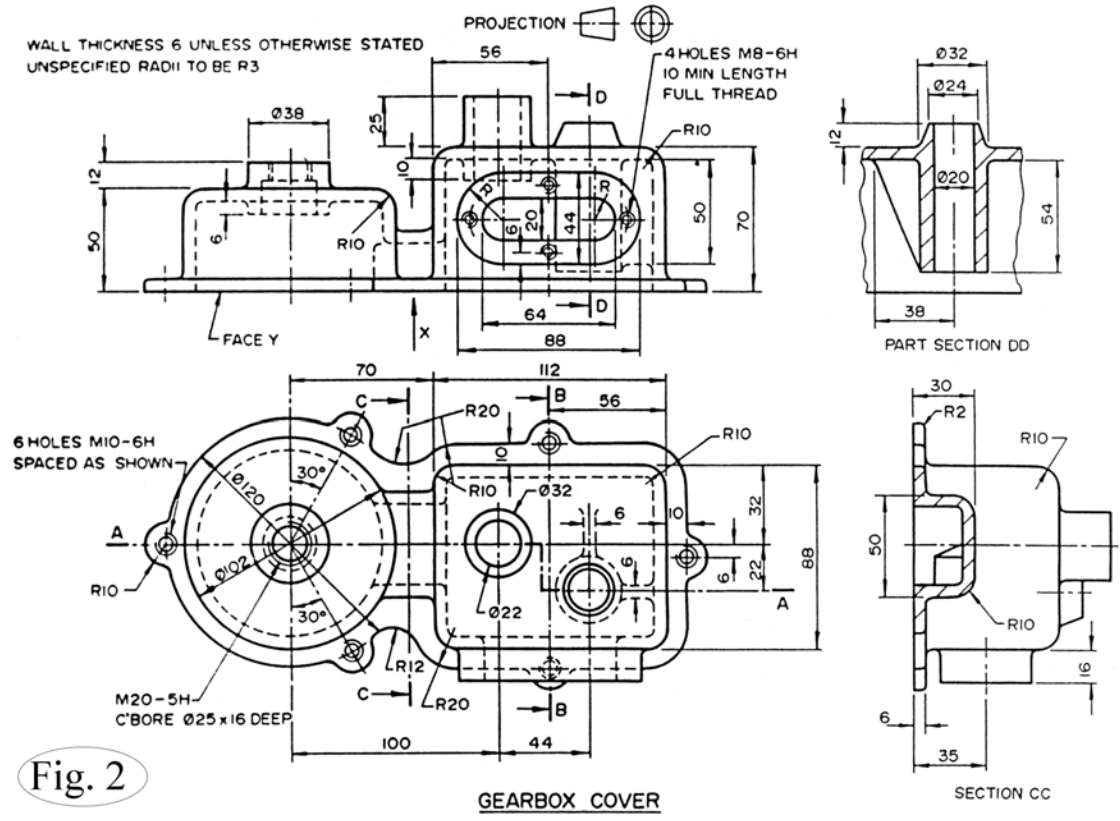


Fig. 2

GEARBOX COVER

# PART 3

## PART 3 DIMENSIONING

