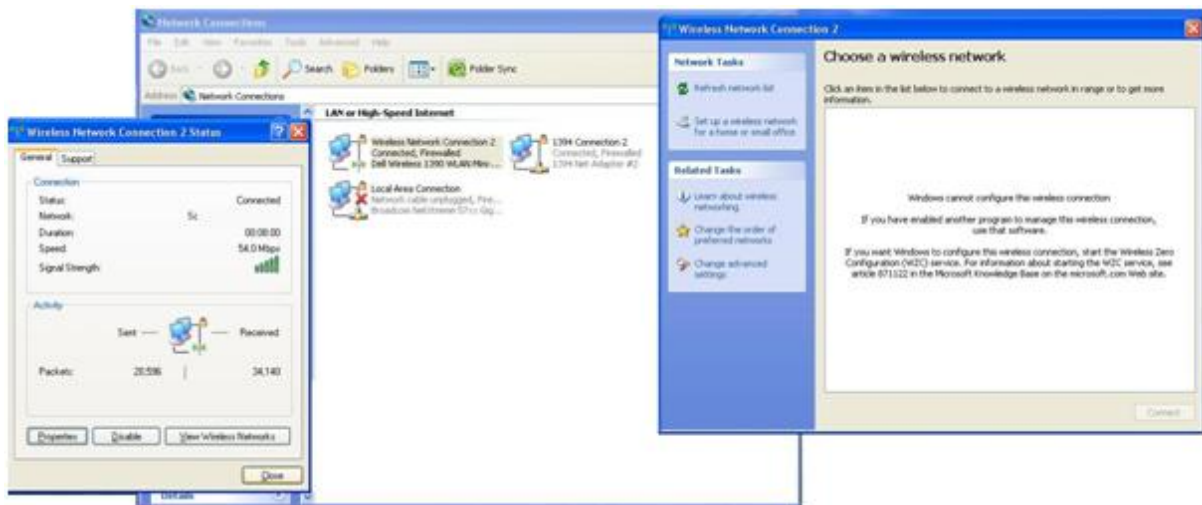


Dell Wireless Utility & Preferred Networks

- If a “Dell Wireless Utility” or similar Wireless Program is installed, the following will appear in the Windows Networking, when going “Properties” of the Wireless adapter.



- Dell’s Wireless Utility should normally be located down beside the Clock on the Bottom Right.



- Right-Click on the Signal/Wireless Icon and go “Open Utility”.



- Once the “Utility” is open, go to “Wireless Networks”, and “Preferred network connections”. Select the SSID and click Remove.

